



LUMEAL motorization
February 2013





Lumeal motorization



■ Objectives :

- To motorize large sliders
- To make easier opening/closing and locking/unlocking

- ## ■ Application : 1 leaf + fixed light and 2 leaves
- ⇒ Only service sash can be motorized





Motorization

■ Accessibility

⇒ **Improve user's comfort** (upmarket customers, the elderly, the disabled)

⇒ Make easier opening/closing systems

■ Upmarket business areas

⇒ Villas, hotels, retirement homes





Lumeal motorization



■ Advantages :

- ⇒ Switch-mode power supply for a worldwide adaptation
- ⇒ Electronic board with tropical coating enabling the motorization running in 100% relative humidity atmosphere
- ⇒ Large dimensions (frames up to 4 meter long)
- ⇒ Maximum daylight : $Sw=0.55$
- ⇒ Compliance with RT2012





Lumeal motorization

■ Features :

– **Dimensions :**

- Maximum sash dim.: H = 2800, L = 4500 (2657 x 2184mm per leaf)
- Minimum sash dim. : H = 1000, L= 1000
- **Maximum weight per leaf:** 250kgs

■ Lateral displacement :

– **Noiseless**

- **Speed :** around 0.15m/s (depends on size and weight of leaf)

■ Security :

- In case of obstacle, the door stops and goes back to release
- Possibility of manual handling in case of power cut

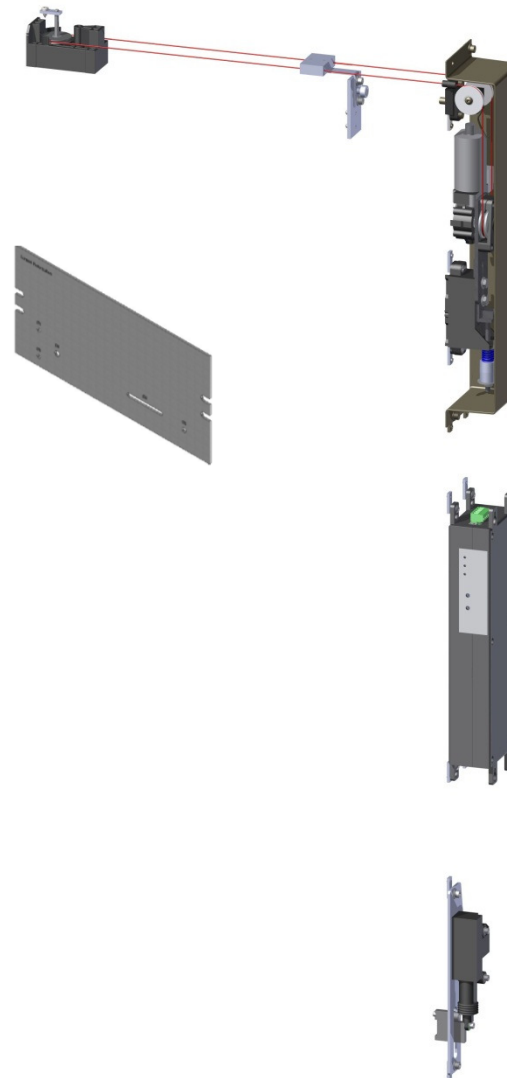




Lumeal motorization

■ 3 new references :

- Motorization kit (GA3700)
- Template (GA7001)
- Architrave (391028)





Lumeal motorization



■ Simple motorization system :

- Integrated on frame : location for motorisation is 60 mm
- Automatic learning cycle (sensing of opening and closing stops) is initiated at the first utilization and every 50 cycles
- According to sash weight and dimension

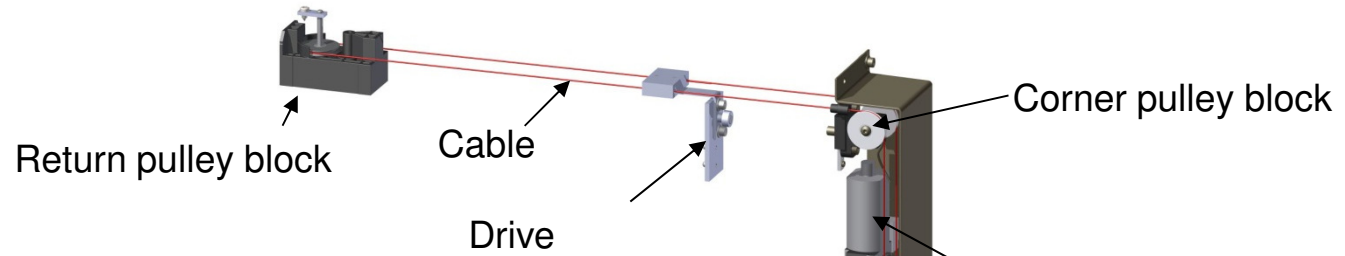
■ After-sale service :

- Simplified diagnosis
- Dedicated technical assistance
- **Motor guarantee: 3 years**

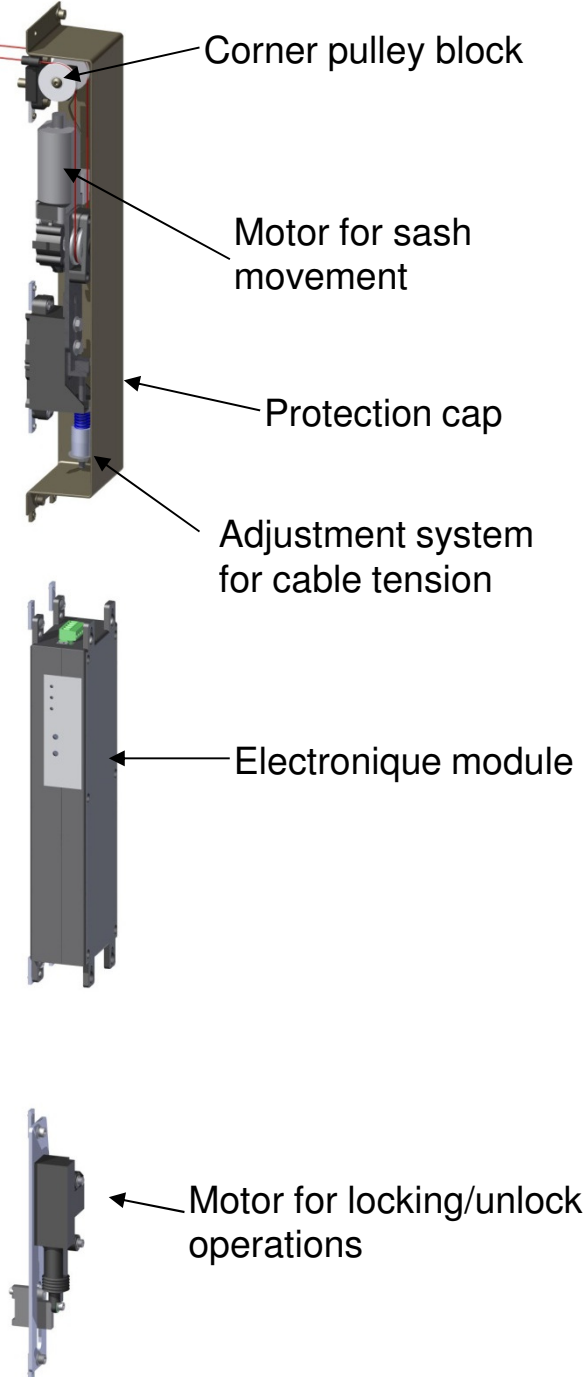
■ Adapted documentation : available in PDF

- Fabrication instructions
- Installation instructions
- User instructions





Motorization system details



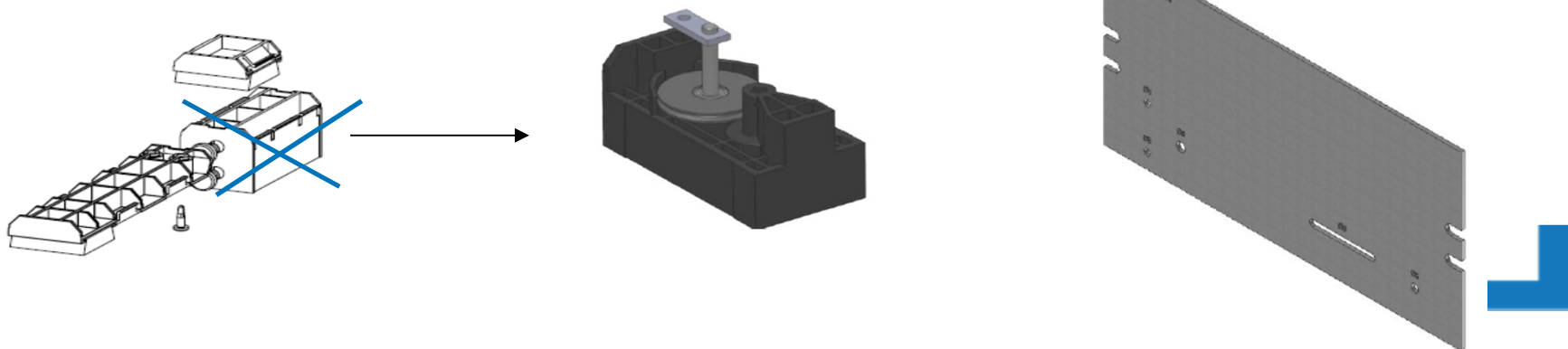


Implementation - details



■ Fabrication is identical to a standard Lumeal frame except following points:

- **Supplementary machining:** sur la traverse haute du dormant pour la poulie de renvoi (perçage) et sur le montant dormant pour les moteurs (fraisage avec plaque à copier GA7001)
- la butée de l'ensemble "Talon Etanchéité haut" 401000 est à remplacer par la butée "poulie de renvoi" qui fait partie du kit





Implementation - details



- **Weathering piece 441000** has been modified to enable cable passage; reference remains the same

=> **Attention : please use modified version supplied with the motorization kit.**

